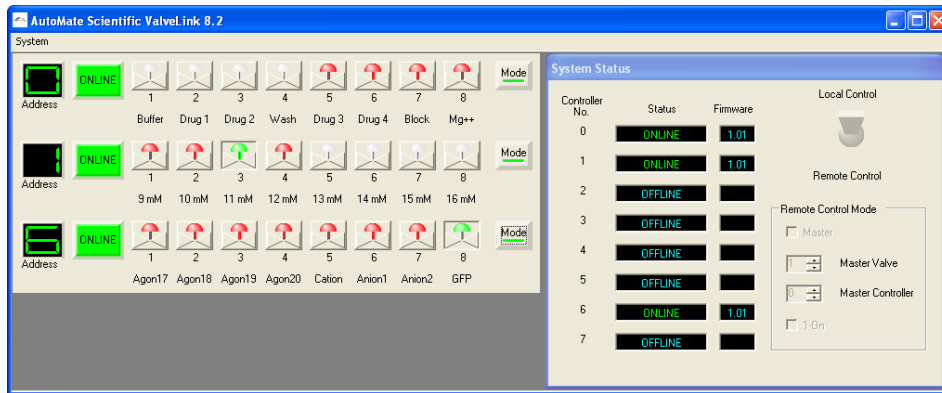


## ValveLink8.2® User Interface Software

This program allows manual control of valves from your PC and networking of up to eight ValveLink8.2s. It can be downloaded from AutoMate Scientific's web site at <http://www.autom8.com/valvelink.html>.



Screen shots show Windows XP, but ValveLink software also works on Vista and Windows 7.

### Windows 7 Installation

Important: Do not let Windows® OS pick a USB driver. You must follow these installation instructions carefully! Do not plug the ValveLink8.2 into your computer's USB port until you have installed the ValveLink8.2 software and read the rest of this section. If you have one, insert the ValveLink8.2 CD into your computer and follow the instructions to install the main application. Or double-click the "setup.exe" installer you have downloaded from AutoMate Scientific's web site. Do not run the "ValveLink" program yet.

1. With the ValveLink controller unplugged from the computer, run "Setup.exe"
2. Enter a name and company
3. If you see a window titled "User account control", answer "yes"
4. Press "Finish installation"
5. Make sure the ValveLink controller is powered, and connect it to the computer with a USB A-B cable
6. You will see a small window that says "installing device driver software...", followed by "device driver was not successfully installed". Don't worry.
7. Go to Start Menu -> Devices and Printers
8. Double Click "Valvelink8.2" icon
9. In the "Hardware" tab, press the "Properties" button
10. In the "General" tab of the new window, press "Change Settings"

11. In the "General" tab of the new window, press the "Update Driver" button
  12. In the new window, select "Browse my computer for driver software"
  13. Select the "C:\Program Files (x86)\AutoMate Scientific\ValveLink\Drivers" folder, and press "next"
  14. If prompted with "Windows can't verify the publisher ...." select "install this driver anyway"
  15. You may see another warning "device driver was not successfully installed". Again, don't worry.
  16. Double click the "Valvelink8.2" icon again in the "Devices and Printers" window.
  17. In the "Hardware" tab, select "USB Serial Port", press the "Properties" button and go through steps 10-14 again. You should then be able to run the ValveLink program from newly-installed desktop icon.
- See "Software Operation" starting on the next page.  
Installation may vary by computer. Contact us for assistance.

### Windows XP Installation

Important: Do not let Windows® OS pick a USB driver. You must follow these installation instructions carefully! Do not plug the ValveLink8.2 into your computer's USB port until you have installed the ValveLink8.2 software and read the rest of this section. If you have one, insert the ValveLink8.2 CD into your computer and follow the instructions to install the main application. Or double-click the "setup.exe" installer you have



downloaded from AutoMate Scientific's web site. Do not run the "ValveLink" program yet. Once the program is installed you can plug a USB (A-B male) cable into the ValveLink8.2 (powered ON) and into your running computer.

Depending on your version of Windows, the first time a ValveLink8.2 is installed by USB cable, Windows will "find new

See the next page.



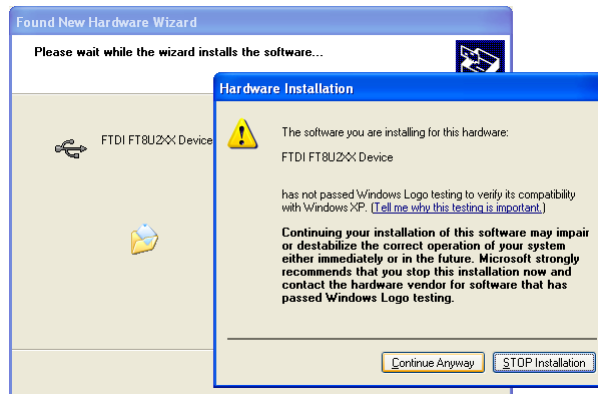
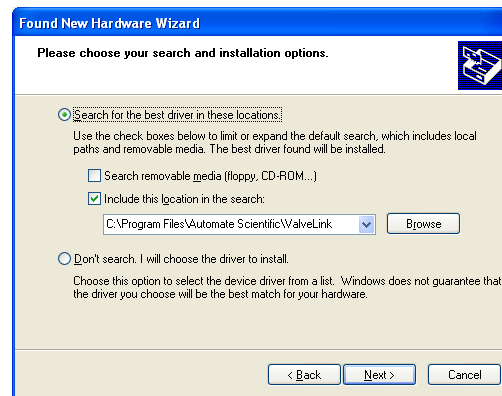
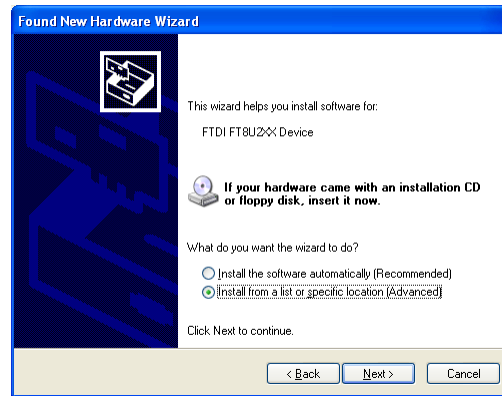
hardware." A dialog box will appear asking if you want Windows to connect to Windows Update to search for the necessary software drivers. Select "No, not this time" and click "Next" to continue.

In the next dialog box, select "Install from a specific location (Advanced), and click "Next."

In the third Wizard screen, choose "Search for the best driver in these locations," and check the "Include this location in the search:" box. You can browse to the following ValveLink folder, or type it in the box: C:\Program Files\AutoMate Scientific\ValveLink Uncheck the "Search removable media" box if necessary and click "Next."

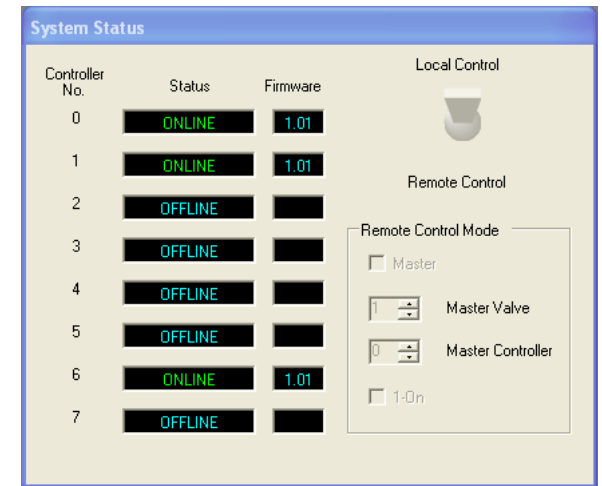
Finally, you will see a warning box explaining:

"The software you are installing for this hardware: FTDI FT8U2XX Device has not passed Windows Logo testing to verify its compatibility with Windows. Continuing your installation..." Click "Continue Anyway" and "Finish" the hardware installation. You may now run the ValveLink8.2

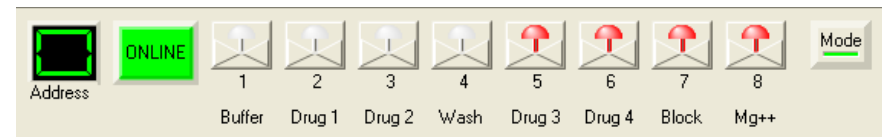


## Software Operation

After the ValveLink8.2 software and USB drivers are installed on your computer, you may run the program. Any ValveLink8.2s currently plugged-into the computer or USB hubs will appear in the System Status box as "Online" next to their USB address. This address comes from the 8-position rotary switch on the back of each ValveLink8.2 next to its USB port. If you connect multiple ValveLink8.2s to the computer, be sure to set each one to a different address.



If you connect a ValveLink8.2 to the computer while the User Interface program is already running, click "Discover Controllers" under the System menu to add it. The System Status window also shows the current version of the firmware (internal programming) of each ValveLink8.2. You can visit AutoMate Scientific's web site to check the latest firmware version, but it can only be updated by AutoMate Scientific at its office.



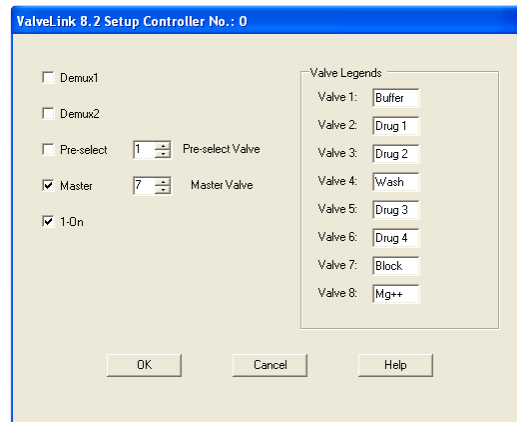
Each ValveLink8.2 will display its own control window with its Address and eight LED buttons of each valve. These buttons should mirror those on the front of the ValveLink8.2 and clicking the buttons should toggle valves exactly like the real buttons.

Depending on your computer's speed and USB bus, there may be a noticeable delay between the real ValveLink8.2 buttons and LEDs and updates on your computer screen. USB communications in Windows are not necessarily real-time. A 100 millisecond delay is not uncommon. If the CPU is busy with other programs, printing, or lots of traffic on the USB bus, then signals to and from the ValveLink8.2 may suffer. For maximum performance, plug the

ValveLink8.2 into a USB port connected to its own USB bus. Remember that computers with multiple USB ports may simply be splitting a single USB bus internally. Check with your computer's manufacturer or add a separate USB card to your computer for minimum latency.

The System Status window has a large switch labeled "Local Control" and "Remote Control." When set to "Local," each ValveLink8.2 follows its own Mode settings as described in the "Modes" chapter earlier in this manual. When set to "Remote Control," all networked ValveLink8.2s behave according to a single common "Mode" setting made on the System Status window. In this way, up to eight ValveLink8.2s can be networked into a single, virtual 64-channel controller. A single "Master Valve" can be selected on a "Master Controller" like Mode #5 on the ValveLink8.2. Also "1-on" Mode means only one valve will be open at-a-time on all of the networked controllers.

When the System Status switch is set to "Local Control" you can click the "Mode" button on any ValveLink8.2 sub-window to access a dialog box of Modes for that ValveLink8.2 along with eight text "labels" which will display under each button. These labels can be used to help identify which solutions are being delivered through each valve.



The same comments about USB communications speed above also apply to multiple-ValveLink8.2 networking. If "1-on" Mode is used and a button is pressed on one ValveLink8.2, that signal must travel to the User Interface program on the PC and back to all other ValveLink8.2s to close any open valves. The double delay may be noticeable on slower computers or USB busses.

**\*Requires Windows .NET 2.0 or higher.**



650 University Ave #5  
Berkeley, CA 94710  
U.S.A.

**(800) 998-MATE**  
-6283

international (510) 845-6283  
fax (510) 665-3975  
info@autom8.com  
<http://www.autom8.com>