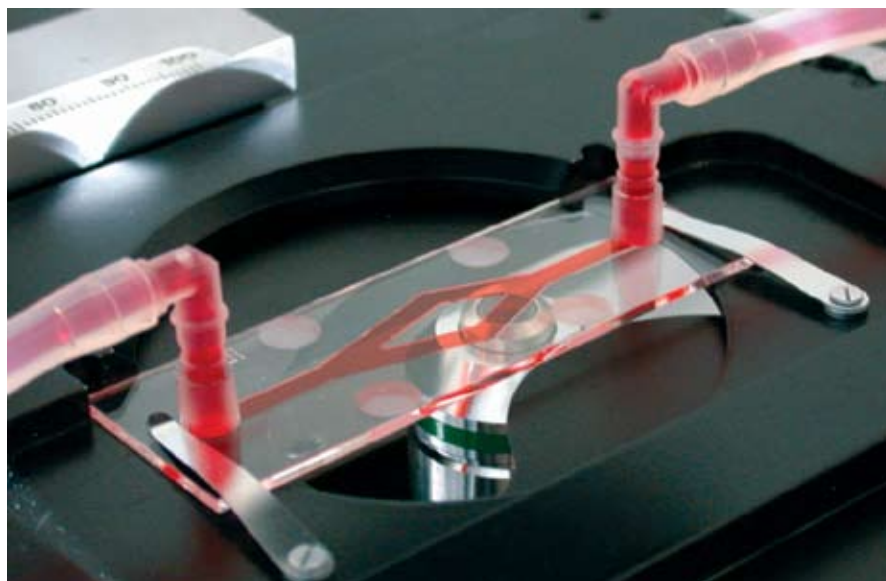


Live cell imaging like you've never seen it before.

Ask for
3 free
samples



Biomicroscopy μ -Slides

μ -Slide I Luer - High resolution microscopy of living and fixed cells

- Combination of a cell culture chamber and a coverslip for imaging inside a channel
- Immunofluorescence stainings with easy liquid exchange
- Real-time imaging during staining process
- Luer connections available for easy flow applications in a channel
- Channel volumes of 25 μ l / 50 μ l / 100 μ l / 150 μ l / 200 μ l



Investigate chemotaxis and migration of adherent cells in linear gradients

- Chemotaxis of cancer, endothelial cells, fibroblasts, etc.
- Chemotaxis of slow migrating, adherent cells
- Migration assays with simultaneous cell tracking
- 3 chambers on one slide for parallel assays
- Linear gradients, stable for over 48 hours
- Made for high-end video microscopy
- New "3-D" chemotaxis μ -Slide also available



Q7	12
Q6	13
Q5	14
Q4	15
Q3	16
Q2	17
Q1	18
Q0	19
	20
	10
OE	
1	



μ -Slide VI - 6 channel μ -Slide for flow assays with minimal volume

- Flow assays with a minimum number of cells and/or liquids (mouse model)
- Parallel shear stress applications
- Parallel screenings using multichannel pipettes
- Smallest ibidi channel slide with highest shear stress
- Easy connection to tubes and pumps via female Luer adapter



μ -Slide γ -shaped for bifurcation studies and blood vessel simulation

- Non-uniform, laminar shear stress
- 30° and 45° angles to simulate the bifurcation of a vessel
- Designed for arteriosclerosis research
- Ideal for cell-cell interaction studies and cell-drug interaction screenings under flow conditions
- Easy connection to existing tubes and pumps via female Luer adapters



μ -Slide V - Protein assay μ -Slide for parallel solid phase immunoassays

- Extremely low sample volumes
- Protein recognition and binding studies
- Determination of binding constants based on fluorescence imaging
- 10 μ l channel volume saves reagents
- Adapters for all different pipette types



Open μ -Slide 8 well for immunofluorescence and high-end microscopy

- Cultivation and microscopy of cell cultures
- Fluorescence microscopy of living and fixed cells
- Low evaporation = long term assays
- ibiTreat surface for optimal cell adhesion
- One piece system, no peel off from the bottom
- Excellent optical quality
- No glue = no leakage, no cell harm





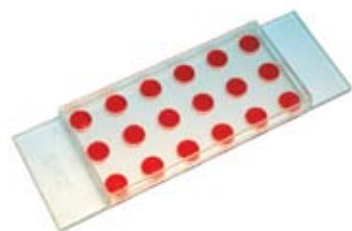
μ -Slide Angiogenesis

- Cell microscopy on or in 3D-gel matrices
- Creates a flat gel surface with a minimum use of gel
- Tube formation assays
- Immunofluorescence staining
- 3D cultures
- Flat gel surface = all cells in focus
- Homogeneous 0.8 mm thick gel layer
- Use only 10 μ l of gel per well



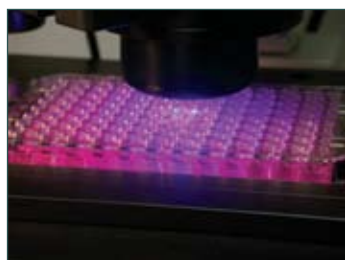
μ -Slide 2 x 9 well for co-cultivation assays

- Co-culture experiments with different cell lines or primary cells
- Scratch assays with co-cultures
- Cultivation and microscopy of cell cultures
- In-situ cell experiments without cell transfer
- Two major wells each with 9 minor wells
- Cells share soluble factors but grow separated
- Low evaporation for long term assays
- Excellent optical quality



μ -Slide 18 well flat for matrix tests or spotting samples such as RNA assays

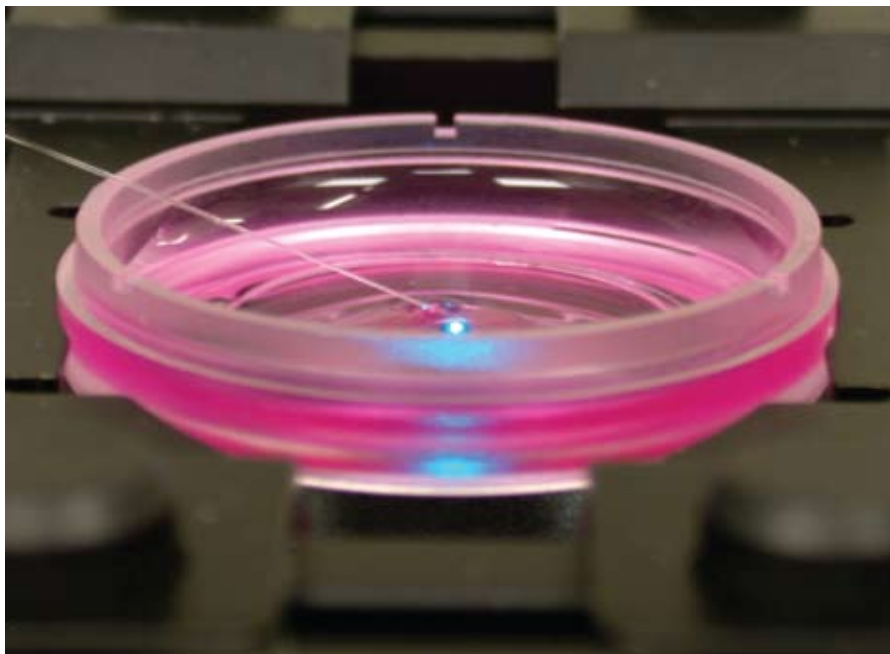
- Quick immunofluorescence stainings of adherent cells
- Optimization of surface functionalizations
- Fast toxicological screening of small microscopy samples
- 18 fold sample preparation
- Compatible with multichannel pipettes



96 and 384-well μ -Plates for high-throughput applications

- Fluorescence based imaging of living or fixed cells
- High-throughput screening (HTS) in cell culture
- Compound screenings (toxicology)
- Large-scale transfection experiments
- Compatible with automation equipment
- Standard format and dimensions of 85.5 x 127.5 mm
- 96 / 384 quadratic wells with standard numbering
- Excellent inner well flatness and whole plate flatness

Biomicroscopy μ -Dishes



Ask for
3 free
samples

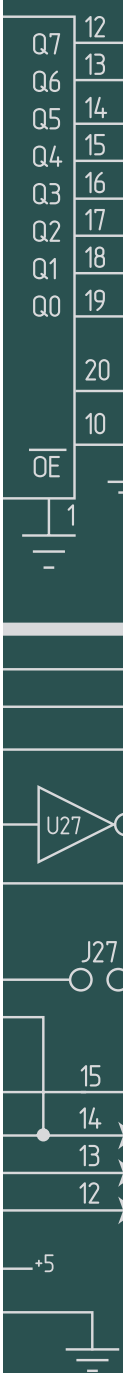
μ -Dish 35mm with high or low walls, or glass bottom; 50mm & grid versions

- Standard-sized 35 mm Petri dish with a thin bottom for high-end microscopy and cell based assays
- Low-wall version for micromanipulation and microinjection
- Fluorescence microscopy of living and fixed cells
- Now available with DIC lids and XY grids
- Glass bottom version for TIRF and single molecule applications
- 50 mm size with large cultivation area also available



Culture Inserts for wound healing, 2D invasion assays, stem cells

- Co-cultivation (2D invasion assays)
- Preparation of two individual cell patches or coatings
- Sticky on underside; no material remaining when removed
- Defined cell free gap of approx. 500 μ m
- Tested for cell compatibility – made of silicone
- 4-well stem cell Culture Inserts for differentiation also available



μ -Slide and μ -Dish Accessories



μ -Slide rack

- Prevents scratching the bottom of μ -Slides
- Ideal storage after oil immersion microscopy
- Allows easy gas exchange through the bottom of μ -Slides
- Stackable, made of aluminum
- Convenient parallel handling for up to eight μ -Slides
- Easy slide transportation from incubator to work bench



Olaf humidifying chamber for slides

- Preserves humidity, temperature and gas concentration during incubation of cells (inside the incubator)
- Can be combined with click racks (shown)
- Inside dimensions fit multi-well format (127.5 mm x 85.5 mm)
- Sterilization via alcohol / water mixture

Biomicroscopy μ -Slides & μ -Dishes Ordering Information

AutoMate Scientific carries the entire ibidi product line.
Please call or email for more information and pricing.

Syringe Pumps

- Very accurate volume delivery
- No flow pulsation after initial start
- Circulating flow available with push-pull pump
- Programmable flow rates and volumes available
- Single and multiple syringe configurations
- Accepts syringes from 10 μ l to 140 ml



Heating stages and incubation units

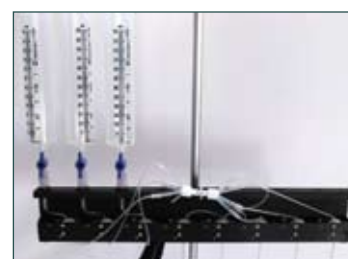
- Universal heating system for all microscope platforms
- Fits into a standard 96-well plate insert
- Micro environment via heated plate and heated transparent lid
- Heated transparent lid prevents condensation on μ -Slide lids
- Inserts for μ -Slides, regular slides, or 35 mm dishes
- Controller for two separate heating systems
- Optional gas incubation unit
- Analog heat controller available for stable microscope focus



See large image on previous page

Calcium imaging perfusion system

- Deliver three solutions into six independent μ -Slide VI channels
- Programmable switching and waste collection
- Complete system with stand, valves, controller and tubing
- Ideal for automated Calcium imaging studies



3-into-1 μ -Slide perfusion system

- Deliver three different solutions into three independent μ -Slide III 3-into-1 channels
- Programmable switching and waste collection
- Complete system with stand, valves, controller and tubing
- Control or reverse a chemical gradient across the μ -Slide
- Add an optional wash or "spacer" solution between the gradients

