

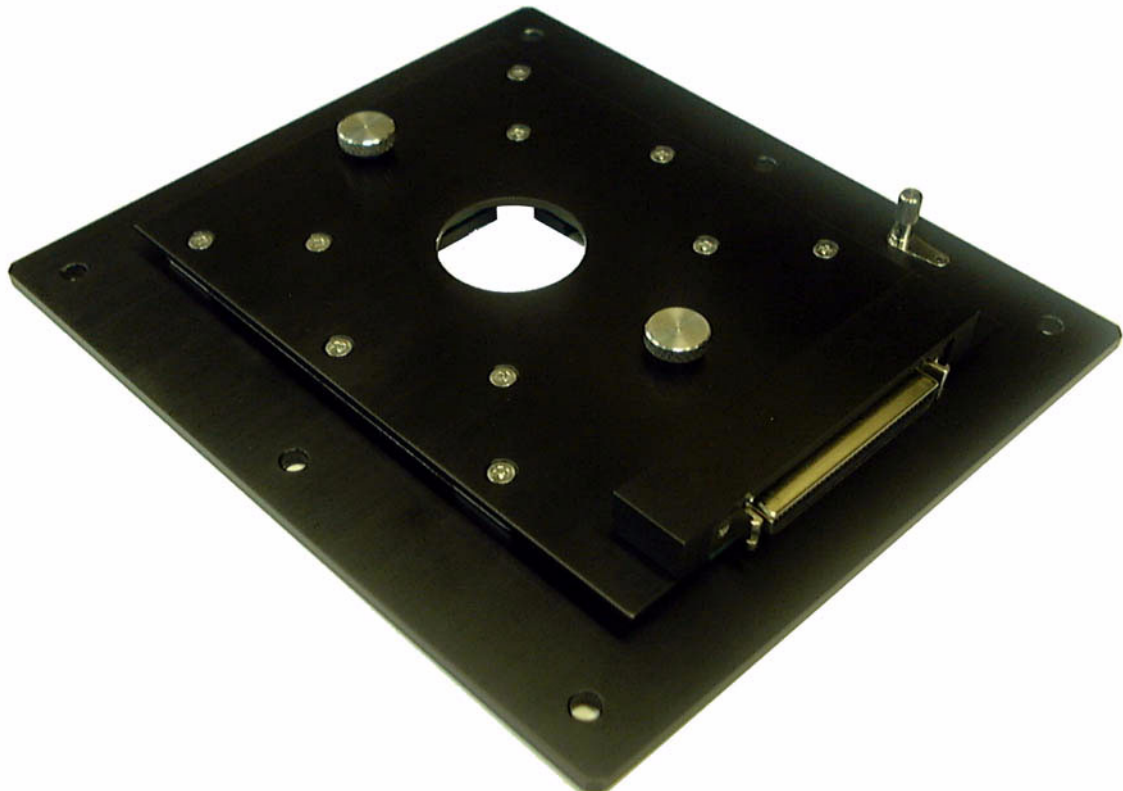


An advanced solution
for *in vitro* electrophysiology

MED CONNECTOR

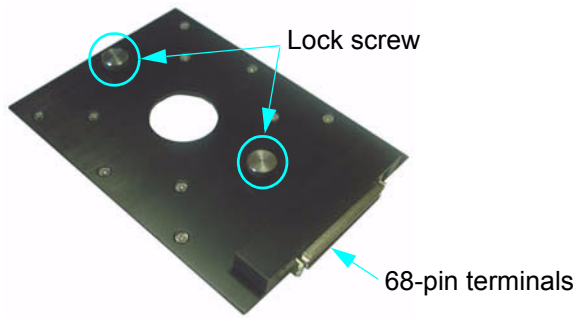
Operating Instructions

P/N: MED-C03

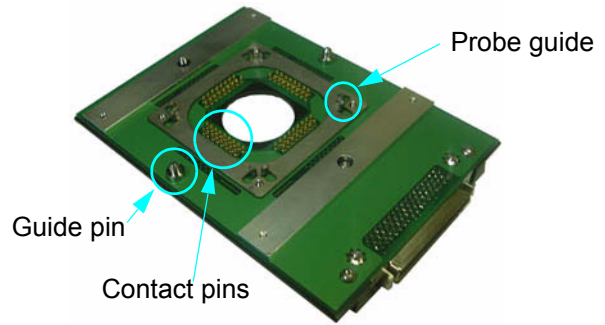


Parts

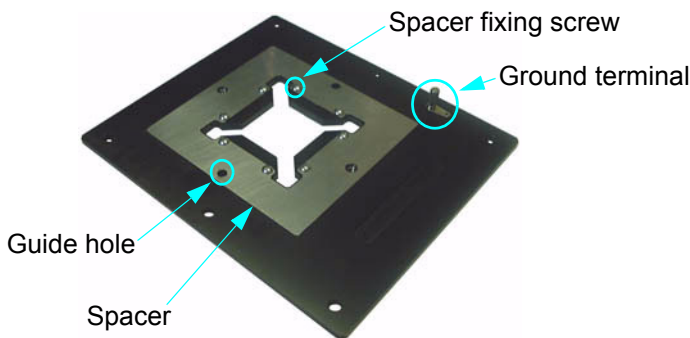
■Connector unit (Top view)



■Connector unit (Bottom view)



■Connector base



Directions for use

1. CLEANING

Wipe away dust with a lint-free cloth (e.g., lens cloth for glasses).

* It may also be necessary to carefully wipe and gently push on the contact pins several times with lint-free cloth several times to improve performance of contact.

2. STERILIZATION

Wipe with a lint-free cloth soaked in 70% ethanol, and dry completely.

* Do NOT autoclave as it may damage the MED connector.

3. PLACEMENT of MED probe in MED connector

1) Place MED probe inside the spacer fixing screws on connector base.

NOTE: Prior placement of a plastic spacer is necessary when using 0.7 mm thick probes.

2) Place connector unit over probe by aligning matching guide pins with guide holes.

3) Turn lock screws until relatively tight.

4. GROUNDING

Ground the wire to the ground terminal if necessary.

5. STORAGE

Store in a cool dry area. Avoid exposure to high temperatures or dampness.

Cautions

1. AVOID mechanical shock.

2. Do NOT give strong mechanical shock by putting heavy material on the unit or dropping the unit.

3. Do NOT tighten the lock screws too much. It may make damage the lock screws.

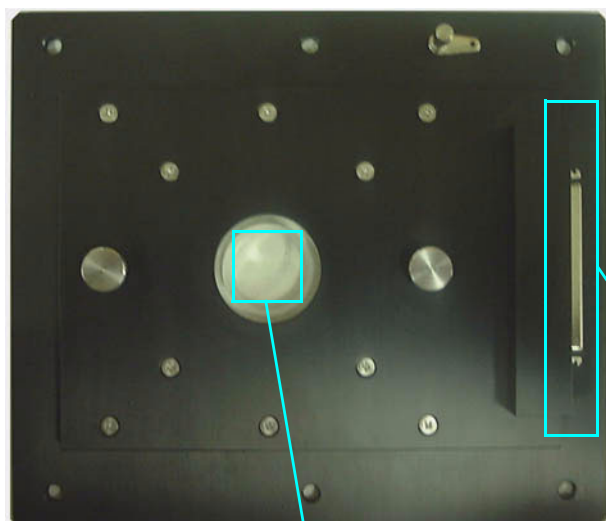
* The torque of the screw should not exceed 8kg.cm.

4. Do NOT touch the contact pins with bare hands or fingertips. This may cause rust and adversely affect conduction. If you spill medium or any other liquid on the contact pins, wash immediately with double-distilled water (DDW) and dry out carefully.

5. Do not overley press the contact pins and probe guide too much. It may damage and affect conduction.

6. Blow the surface of contact pins to remove dust before use in order to prevent poor operating conditions, but not by mouth since moisture in the breath may cause rust. A clean compressed air spray would be preferable for this purpose.

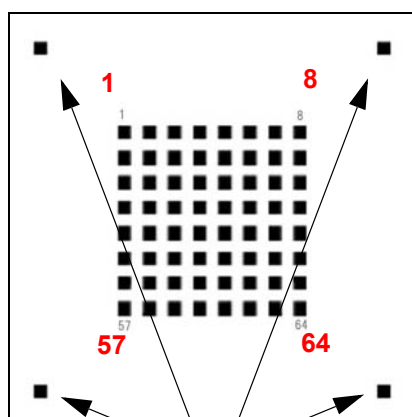
Illustration of the terminal arrangement



68-pin terminals layout



60	52
36	44
53	61
45	59
54	62
63	51
64	55
56	43
47	46
48	58
39	38
40	(R) bottom-left
32	37
31	(R) upper-left
24	30
23	(R) bottom-right
15	16
8	(R) upper-right
19	9
18	1
27	17
26	10
28	25
33	2
35	34
41	11
49	42
50	3
7	57
22	20
6	14
21	12
5	13
29	4



Reference electrodes (R)

Warranty

In the event of a defect in materials or workmanship, this product will be repaired free of charge with new or refurbished parts for one (1) year from the date original purchase.

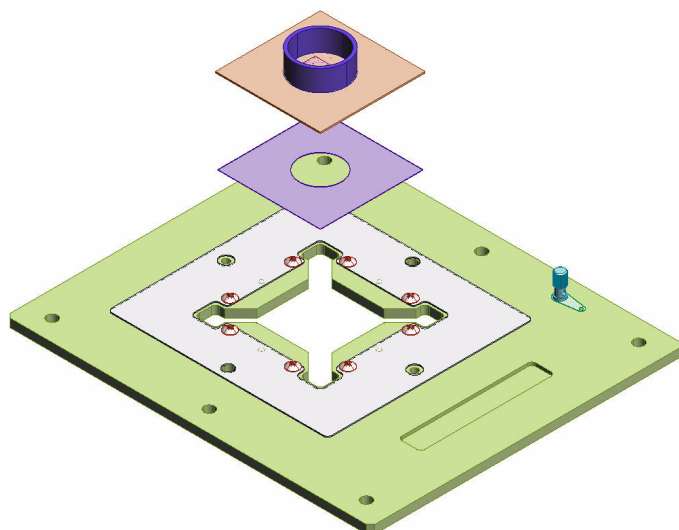
The product warranty covers failures due to defects in materials or workmanship which occur during normal use. It does NOT cover damage which occurs in shipment or failures which are caused by products not supplied by AMS or failures with results from alteration, accident, misuse, neglect, faulty installation, maladjustment of user controls, improper maintenance, modifications or service by anyone other than AMS. In addition, it does not cover damage that is attributable to acts of God.

Please refer attached warranty card in detail.

Using the 0.7 mm MED probe

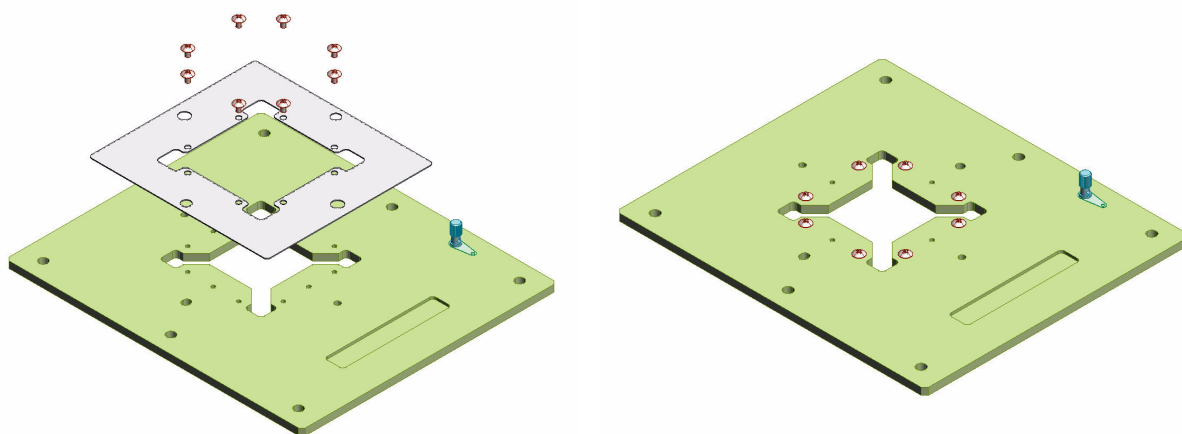
The original MED probes were constructed using a glass base plate with a thickness of 1.1 mm. This thickness has recently been decreased to 0.7 mm and, although the 1.1 mm thick probes are no longer available, the MED-C03 connector is designed to hold either probe. Two methods are given here.

The first assumes that the user has both 0.7 and 1.1 mm probes, and wishes to use both in experiments. In this case, the user needs to insert a 0.4 mm spacer (provided with each 0.7 mm probes) between the bottom plate of the connector and the 0.7 mm probe as shown in the figure below. This spacer is omitted when using probes with a 1.1 mm glass base plate.



Alternate procedure for using ONLY newer MED probes, with a base plate thickness of 0.7 mm. The new MED probe can be used without film spacer by removing the stainless steel sheet from MED Connector, MED-C03 (See figures below)

CAUTION: Do NOT use MED probe of 1.1mm thick glass substrate without the stainless steel sheet.



1. Unfasten the eight screws holding the stainless steel sheet.
2. Remove the stainless steel sheet.
3. Put removed screws into the original holes and fasten them.

Specifications

Contact resistance	< 30 m Ω
Output	68-pin terminals
Printed circuit board	4 layers (the 1st and 4th layers are ground, and 2nd and 3rd layers contain signal line)
Dimensions	W 174 x H 21 x D 150 mm
Weight	480 g

Specifications may not be satisfied depending upon the type of computer or operating environments used.

Only for use in animal studies research.

Specifications and external appearance are subject to change without notice.

October, 2005



Alpha MED Sciences Co.,Ltd.

15T2F Panasonic AVC Company
1-4 Matsuo-cho, Kadoma,
Osaka 571-8505 Japan
Phone: +81-6-6906-2751
<http://www.med64.com>
support@med64.com

Manufactured by **Alpha MED Sciences Co., Ltd.**, Subsidiary of Matsushita Electric Industrial Co., Ltd.

U.S. Patents: 5,563,067 Oct. 1996. 5,810,725
Sept. 1998. 6,132,683 Oct. 2000. 6,151,519 Nov.
2000.

©2005 Alpha MED Sciences Co., Ltd.

RQT5855-Z